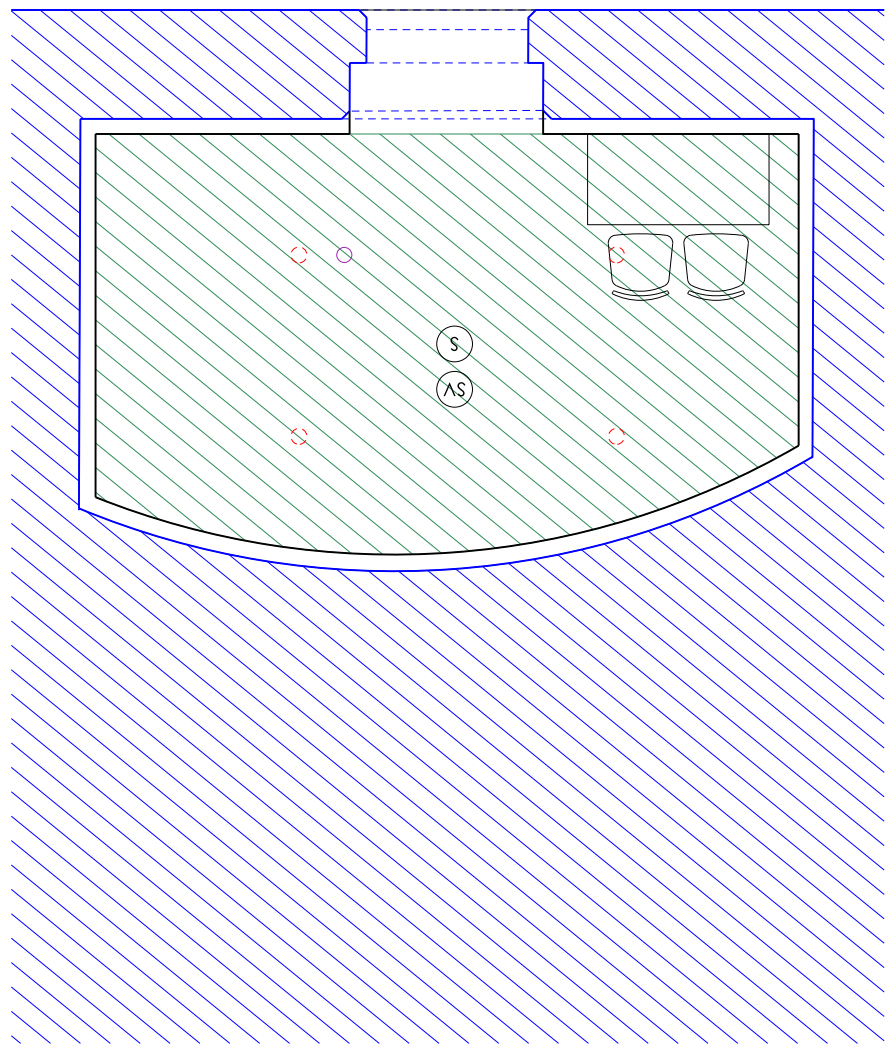
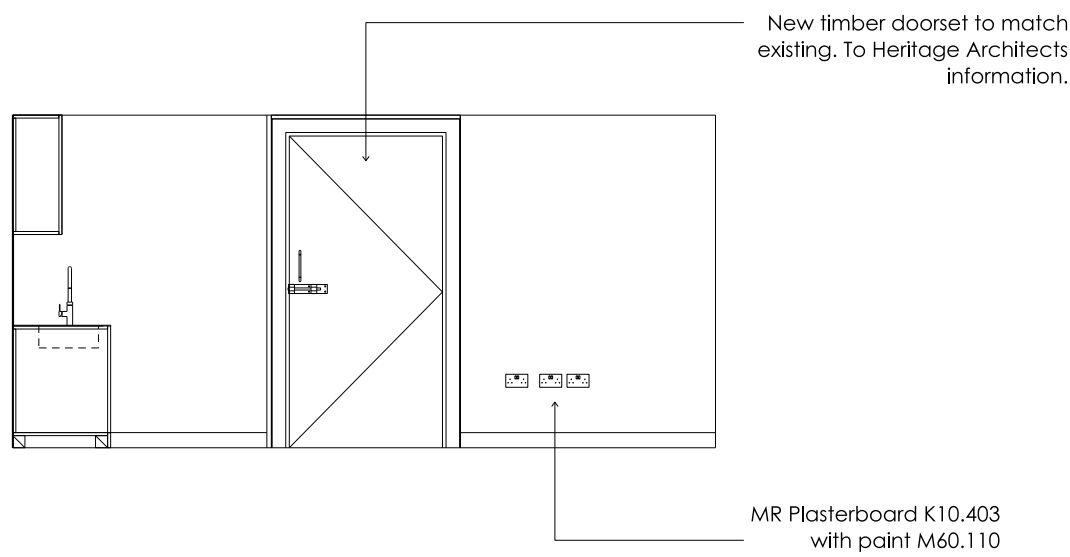


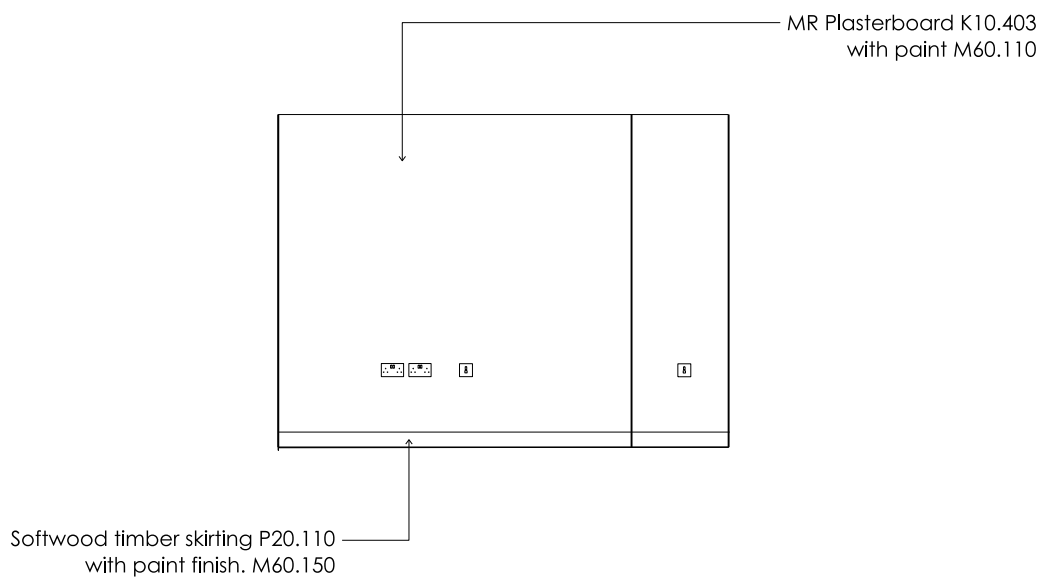
1 Arch 5: Space A
3114 Plan



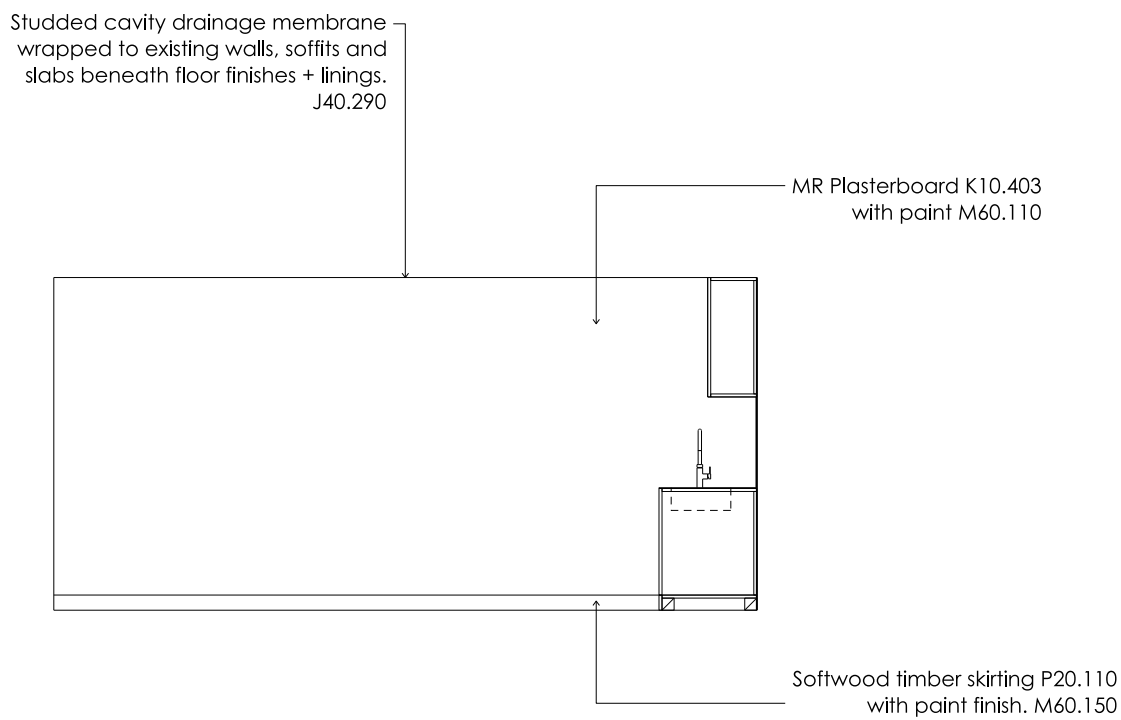
2 Arch 5: Space A
3114 RCP



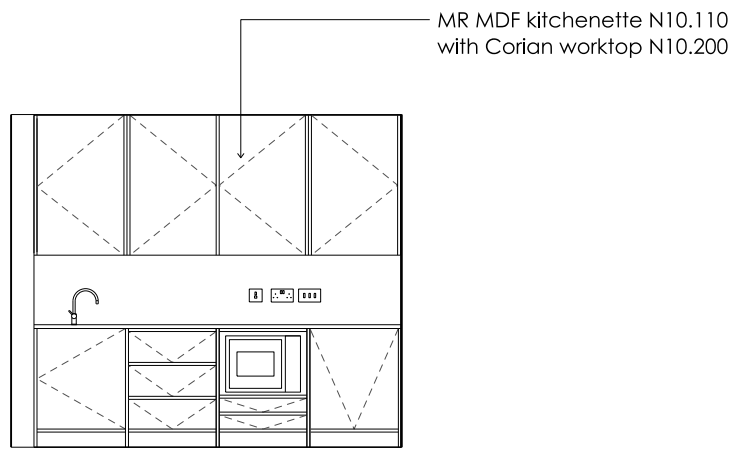
3 Arch 6: Space A
3114 Elevation 01



4 Arch 6: Space A
3114 Elevation 02



5 Arch 6: Space A
3114 Elevation 03



6 Arch 6: Space A
3114 Elevation 04

Key

Ceiling Finishes

- Arched plasterboard MR suspended ceiling.
- Acoustic plaster + paint finish, K10
- Suspended MR plasterboard ceiling with paint finish, K10
- Suspended plasterboard ceiling with acoustic plaster lining, K10
- Existing masonry cleaned and repointed. To Heritage Architects Specification.
- MR (Moisture resistant) suspended ceiling, K10
- Metal lining, K13
- Plasterboard Lining, Paint finish, K10

Floor Finishes

- Linoleum, M50
- Timber (engineered boards), K20
- Carpet, M50
- Quarry tiles, M40
- Concrete Screed, M10
- Entrance Matting, N10
- Metal lining, K13
- Fairfaced Concrete, M10

Services

- Recessed slot grille.
- Recessed extract fan.

Lighting

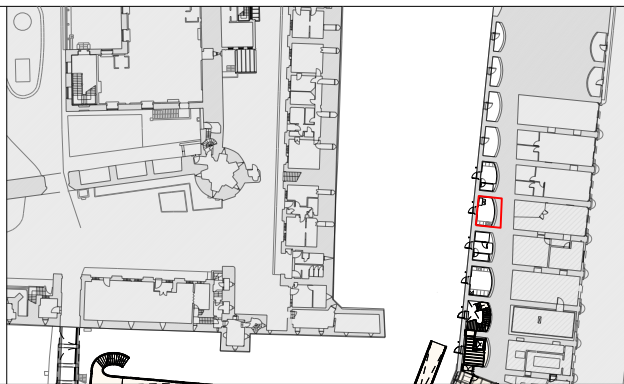
- Suspended track with track mounted spotlights.
- Recessed track with track mounted spotlights.
- Surface mounted track with track mounted spotlights.
- Concealed linear LED.
- Surface mounted downlight.
- Recessed downlight.
- Wall Light.
- Presence detector.
- Recessed uplight.
- Emergency exit signage.
- Emergency lighting.

Small Power

- Switched Fused Connection Unit.
- Wifi Connection Points.
- Light Switch.
- Unswitched Socket Outlet.
- Double Switch Socket Outlet.
- Grid Switch.
- Motion Detector.
- Smoke Detector.
- Smoke Detector with C/W Beacon + Sounder.
- Void Detection.
- Wifi.
- Access Panel.

Tender DRAFT

Existing Fabric



General Notes:
To be read in conjunction with Service Engineer, Structural Engineers and Heritage Architects information.
All demolition and proposed works are to be undertaken in adherence to SMC conditions and Listed Building Consent conditions.



Jamie Fobert
— Architects
Rochelle, 22 Club Row
London E2 7EY
T: +44 (0) 207 553 6560
mail@jamiefobertarchitects.com

Copyright of Jamie Fobert Architects Ltd 2023

Unless indicated below, this drawing is for information only.
Do not scale. Use figured dimensions only. All dimensions to be checked on site.

| Issue/Revision | Date | Rev | Subject | Moat Arch 5 : Moat Staff Volunteer Space A |
|----------------|----------|-----|---------------|--|
| Stage 4 | 18 07 25 | A | Scale | 1:50 |
| Tender Draft | 24 10 25 | B | Original Size | A1 |
| | | | Date | 17 04 25 |
| | | | Drawing No. | TOL-JFA-01-ZZ-DW-A-3114 |